



July 2021

WATS Server 2021.1 Release Note



Major Feature Areas

Manual Inspection.....	3
New Dashboard module – out of Preview	4
New Production Manger – out of Preview	8
Product & test yield.....	9
Rest API.....	10
Miscellaneous features	11
Bug fixes	12

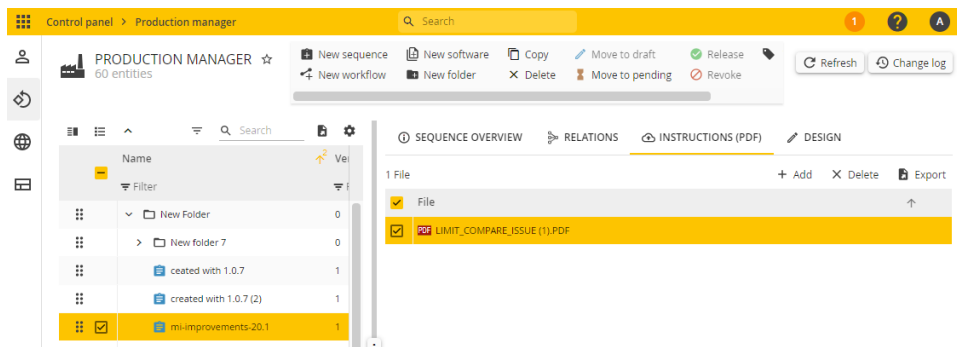


Manual Inspection

Manual inspection (MI) has received several improvements and new features.

Instructions

- Instruction PDFs can now be uploaded to the MI editor (your WATS account), allowing files to be fetched directly from WATS (previously had to be fetched from third-party locations) in the Operator Interface view.



Steps

- Added “Add sub unit” step. Allowing the operator to add sub unit data during MI execution (add to UUT header) as a step action.
- Added “Message box” step. Allowing operators to select from predefined multiple-choice options, which will be logged in the UUT report.

Settings

- Added option to Skip test/step.
- Added option to display sub unit grid in header.
- Added option to automatically fetch UUT miscellaneous info from previous report.
- Added option to include UUR miscellaneous info in the UUT report.
- Added option to auto-create new prefilled manual inspection when a report is failed (this will clear the failed step, and allow the operator to continue testing from where the step failed).



- Added option to log step description in UUT report.

OPTIONS	
Repair on failed	Required
Repair operation	Module Production Repair
Display sub units grid	<input type="checkbox"/>
Submit UUT/UUR report on first failed test step	<input checked="" type="checkbox"/>
Auto-create new manual inspection on UUT failed	<input checked="" type="checkbox"/>
Load UUT misc info from previous report (product)	<input checked="" type="checkbox"/>
Include UUR misc info in UUT report	<input checked="" type="checkbox"/>
Log operator in UUT report	<input checked="" type="checkbox"/>
Log step description in UUT report	<input checked="" type="checkbox"/>

New Dashboard module – out of Preview

The new dashboard is now out of preview. The old dashboard has been marked as legacy and will be removed in an upcoming version of WATS. Note that even though the dashboard is out of preview, there are still plans for new widgets and improvements to existing ones in upcoming versions of WATS. The following list summarises many of the features of the dashboard, focusing on improvements over the old one:

- **Subscribe to dashboard**
Users can now subscribe to a dashboard, to receive the dashboard on email, either daily, weekly, or monthly.
- **Dashboard filter**
As with the old dashboard, each widget in a dashboard can define its own filter in order limit the data being displayed. However, the new dashboard also supports a global filter, which affects all widgets default values. The dashboard filter enables filtering on time, level and product group for all widgets which doesn't specifically specifies these filter properties themselves. This makes it a trivial task to for instance use the same dashboard to view data for the last day as well as the last week or month.
- **Full screen mode**
There is now a button located on the dashboard toolbar to set the dashboard in full



screen mode. Note: using full screen mode is not the same as using the native full screen function in the browser, as full screen mode will also hide the WATS menu.

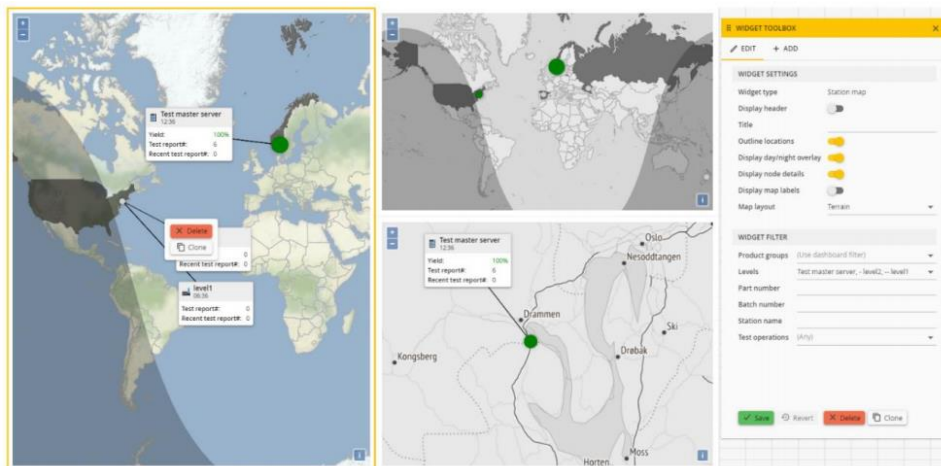
- **Chart labels**

Several of the charts in the dashboard now include labels, making it easier to view the data without hovering over data plots with the mouse. Labels can be turned on/off in the widget settings on a per widget basis.

- **Station map widget**

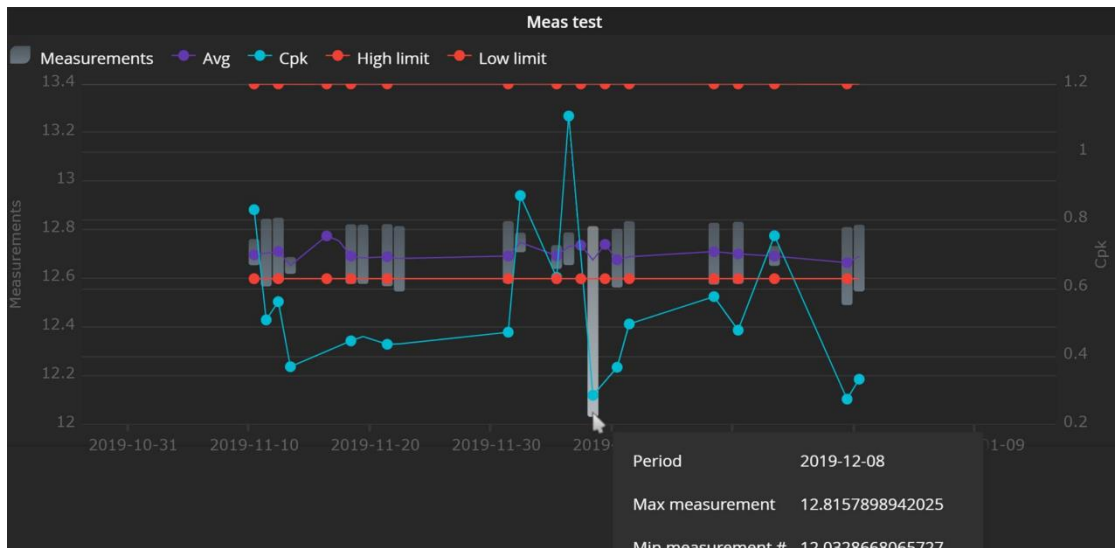
The station map has been changed from being a stand-alone Silverlight component to a HTML5-based widget inside the new dashboard. Each Station map widget has a set of settings and filter-options which allow the user to display Virtual levels data.

It uses GPS coordinates to automatically plot the stations on the map, which additionally gives you a graphical indication of their current health status and the number of Test/ Repair reports transferred or received. It also includes statistical information; number of test reports created last 24 hours, 7 days, current month, current year and total, as well as First Pass Yield and test volume charts that contain figures for the last 24 hours. The statistics are continuously updated with the latest data.



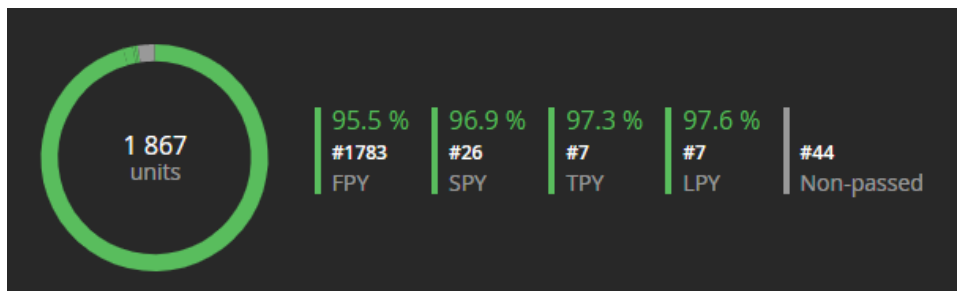
- **New measurement widget**

A new widget has been introduced, enabling view of a single measurement, similar to the chart in Step details (Test step yield & analysis).



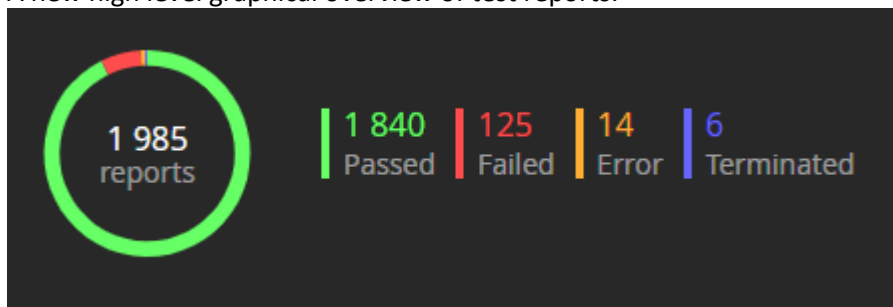
- New pie chart widget**

A new pie chart has been added, enabling a quick overview of yield.



- New Test status widget**

A new high level graphical overview of test reports.



- New Add-to-dashboard widgets**

One of the goals of the new dashboard, is that the user should be able to add any part of the reporting application into a dashboard. Several new grids and charts around the reporting application has now gotten the add-to-dashboard button, enabling a user to add it directly to a dashboard. As of 21.1, the following are added:



Reporting

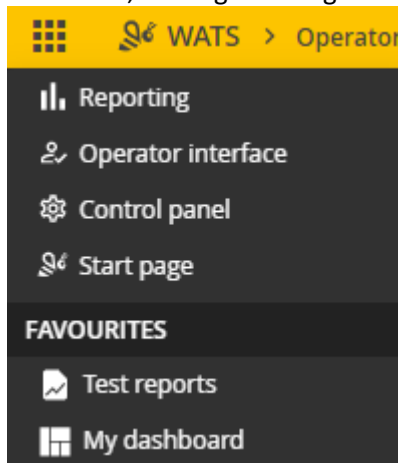
Test reports grid (from Test & repair > Repair reports).
Step caused UUT fail chart (from Test & repair > Repair reports).
Repair reports grid (from Test & repair > Repair reports).
Yield grid (from Yield > Yield report).
Yield chart (from Yield > Yield report).
Product group yield grid (from Yield > Yield report).
Product group yield chart (from Yield > Yield report).
Total process yield grid (from Yield > Total process yield).
Total process yield chart (from Yield > Total process yield).
Product & test yield grid (from Yield > Product & test yield).
Product & test yield chart (from Yield > Product & test yield).

Control panel

Alarms and notifications log (from Process and production > Alarms and notifications)

Further widgets will be added in upcoming versions.

- **Part number & station name auto complete in widget filter**
In 20.2 auto complete suggestions was introduced for the part number and station name fields in the reporting filter. This feature is now also available in the dashboard filter.
- **Dashboards as favourites**
The favourites feature enables users to add modules as favourites, accessible from the start page and upper left menu dropdown. Dashboards can also be added as favourites, making enabling fast navigation to frequently used dashboards.



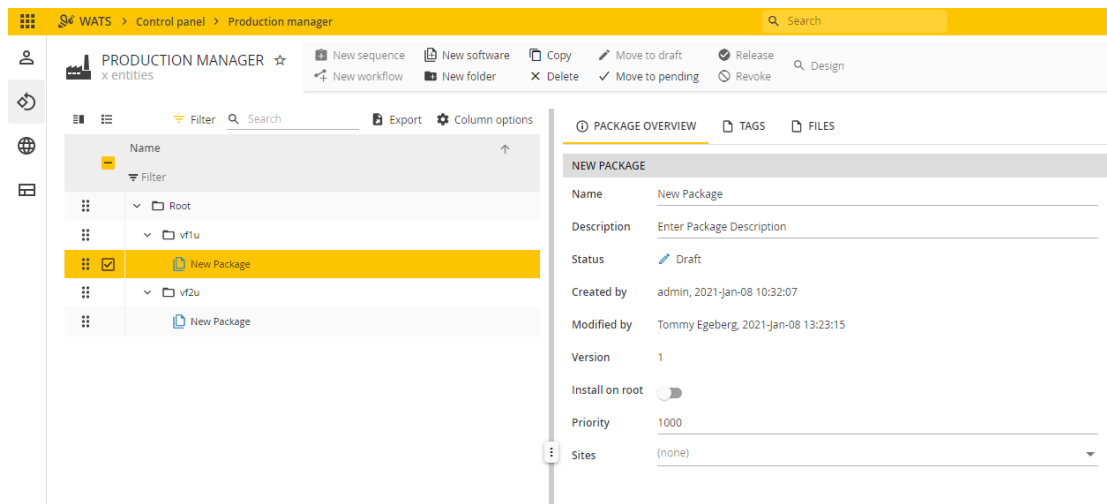
- **Minor features**
 - When editing dashboard, widgets can now be removed with the delete button.
 - The dashboard toolbar is now better optimized for smaller screens.



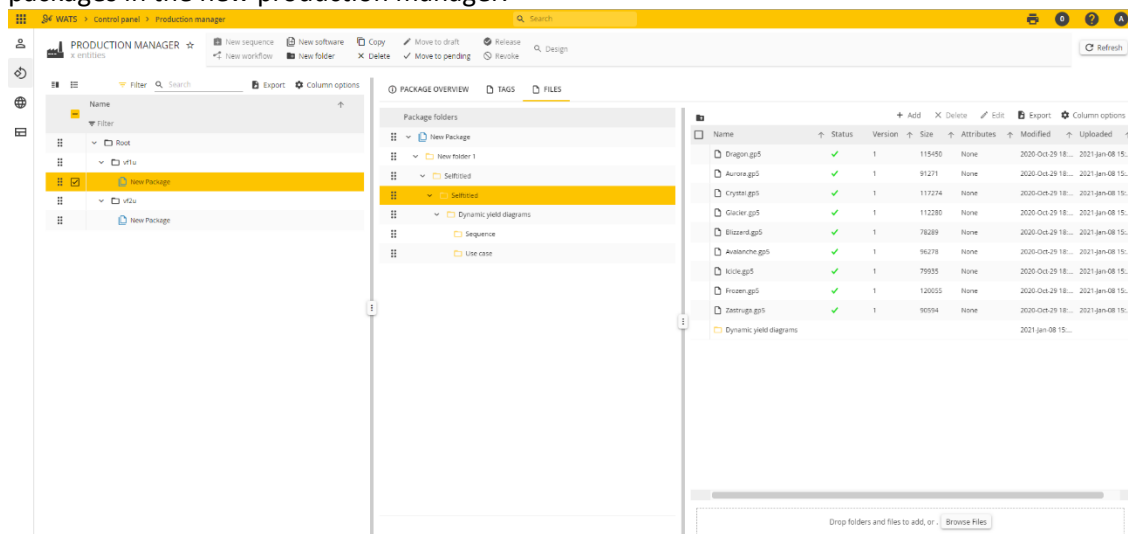
- The statistics overview widget now has a row for last 24 hours.
- When using “Add to dashboard”, User can now create a new dashboard from the add menu.
- The test statistics widget shows data about last 24 hours in addition to today.
- Text box widget, allows the user to display a simple text on the dashboard.

New Production Manger – out of Preview

A new Production Manager will allow users to manage workflow definitions, manual inspection sequences and software packages - all in one place. This new module will replace the Silverlight version of the Software manager and the HTML5 version of the MES manager.



Users can create and modify software packages and upload files and folders to these packages in the new production manager.





Product & test yield

The Product & Test yield has been updated to HTML5 and includes some new features.

PRODUCT AND TEST YIELD ☆
Yield

Product groups (Any) Test operations (Any)

Levels (Any) From date (UTC)* 2021-jul-11 00

Serial number To date (UTC)

Part number

Revision

Batch number

Station name

Top count 100

Min count

✓ Apply filter ✕ Clear filter ➦ Share filter ☰ My filters

Results: 3 Export Column options Add to dashboard

Part num...	Revision	Test oper...	SW filename	SW version	Unit #	FPY #	FPY	FPY PPM	Test report #
100200	A	SW Debug	SW Debug test 1...	0.0.0	8	5	62.5 %	375 000	8
WATS API TEST	1	SW Debug	TestSequence	1.0.0	0	0			1
WATS FAT	FAT	SW Debug	TS2020 - FATv1.s...	19.0.0	2	0	0.0 %	1 000 000	2
3	3	1	3	3	10	5	50.0 %	500 000	11

The yield filter is no longer available as a filtering option. All the different yields (FPY, SPY, TPY, LPY and Test yield) are instead calculated and displayed in the result set.

You can select visible columns from the “Column options” menu. Yield calculations are recalculated when available dimensions are included/excluded.

The product & test yield chart can easily be added to your dashboard with the “Add to dashboard” button.



A new drill-down button has been added, navigating the user to the *matrix view*. This view displays the detailed dataset that makes up the data for the selected row in the grid. This will allow the user to see which serial numbers that are used for the basis of the yield calculations.



WATS > Matrix view

Displaying 8 records Export

Drag a column header and drop it here to group by that column.

runInProcess	↑ serialNumber	↑ partNumber	↑ productName	↑ revision	↑ testOperation	↑ processCode	↑ stationName	↑ location	↑ purp
Filter	Filter	Filter	Filter	Filter	Filter	Filter	Filter	Filter	Fi
	1 54615	100200	LoRa Radar	A	SW Debug		10 DESKTOP-NSBCJU1	Virinco HQ	Debr
	1 423423	100200	LoRa Radar	A	SW Debug		10 DESKTOP-NSBCJU1	Virinco HQ	Debr
	1 6546546	100200	LoRa Radar	A	SW Debug		10 DESKTOP-NSBCJU1	Virinco HQ	Debr
	1 546546	100200	LoRa Radar	A	SW Debug		10 DESKTOP-NSBCJU1	Virinco HQ	Debr
	1 4234234	100200	LoRa Radar	A	SW Debug		10 DESKTOP-NSBCJU1	Virinco HQ	Debr
	1 546546456	100200	LoRa Radar	A	SW Debug		10 DESKTOP-NSBCJU1	Virinco HQ	Debr
	1 r565654	100200	LoRa Radar	A	SW Debug		10 DESKTOP-NSBCJU1	Virinco HQ	Debr
	1 534534534	100200	LoRa Radar	A	SW Debug		10 DESKTOP-NSBCJU1	Virinco HQ	Debr

Rest API

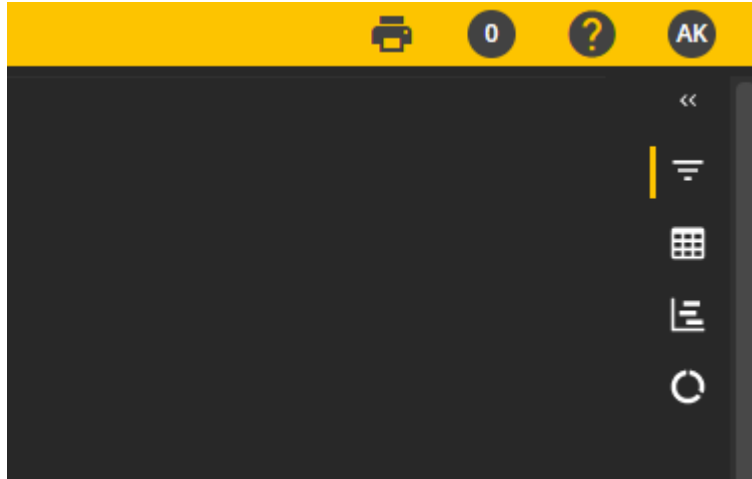
- AggregatedMeasurements**
 Breaking change: Endpoint has been renamed from Measurements. The Measurements endpoint now returns non-aggregated data.
 Get aggregated numeric measurements by measurement path.
- Measurements (preview)**
 Get non-aggregated numeric measurements by measurement path.



Miscellaneous features

- **Reporting navigator minimized view**

The reporting navigator now supports a minimized view, using only icons. This allows more screen real estate to be used for the modules content.



- **Security/Performance enhancements**



Bug fixes

Bug fixes in this list is a summary of items since the last Server release. Most items have already been deployed to cloud accounts through periodic maintenance.

- Serial Number History: Fixed an issue with subunit loading.
- Token: Last activity not updated correctly.
- Favorites: Unable to set Export Wizard as favorite.
- Translations: Unable to add translations.
- Filter: Fixed an issue with dynamic DateTime type.
- UUT report: Number of decimals setting not applied on load.
- General: Misplaced icons on WATS top bar.
- Rest API: Process code filter not working in report/query/header endpoint.
- Dashboard: Total process yield widget
- Transfer Agent: Added setting to include/exclude product groups synchronization
- Reporting: Access denied to reporting when permission to Test and repair is off
- Dashboard: Unable to edit classic dashboard widgets
- Yield report (preview): Level Yield (template) shall only order by Unit count
- Transfer Agent: Type is not set correctly when merging sites and client groups.
- Reporting: Unable to search for UUR misc. info description with no value
- Transfer Agent: Added missing SW package properties to server-to-server sync
- Roles & Permissions: Custom roles are missing some permissions after upgrade
- Reporting: Unable to search for UUR misc. fields
- Dashboard: Station map does not rescale in full screen dashboard
- Changelog: Permission denied for analytics plan
- System Manager: Disable WATS client update (MSI) when linked to a site/server
- Dashboard: Measurement widget does not allow special characters
- Reporting: Cannot delete UUR reports from Repair reports grid
- Product Manager: Synchronization clearing the category
- Reporting: Yield report doesn't always "refresh data" when column options are changed
- Export Wizard: Export to excel does not work without misc. info
- Dashboard: Subscriptions doesn't work for all dashboards
- Link to WATS app iOS on start page is broken
- Client: Exception in "UpdateClientSettings"



- General: Restricted users may not be able to log in
- Dashboard: Self subscription is not removed
- Production Manager: Unable to look up file version from external version control system
- Manual Inspection: Unable to load sequences which include global sequences
- Product Manager: Tags are not saved properly
- Export wizard: Shows "Your export has been queued for processing" to early
- Operator Interface: Deleted UUR shows up in serial number history
- Asset Manager: Asset log query does not work
- Reporting: GR&R: Unique units must be identified by serial number and part number
- Rest API: POST WSJF says additionalResult array dimension and index count is not equal when it is
- Rest API: POST WSXF validation fails when report has AdditionalResults
- Dashboard: Top repair drilldown does not work
- Reporting: Step details - analyze top 10 failed does not work if all measures are mnl
- Serial number handler: Upload serial numbers does not work
- Reporting: Yield Report - Fixed an issue with yield trends
- General: Remove information about email-based yield monitor in notification message
- Export Wizard: UUR export extracts part numbers from UUT query
- Reporting: Improvements to Dynamic Yield
- Rest API: Fixed error in api/App/VolumeYield with product group filter
- General: Fixed Arithmetic overflow exception in the process delta
- Asset Manager: Editing Asset Types does not allow saving
- Added report center error code.
- Reporting: Test report run into bad loop / GUI hang.
- Serial number handler: WATS MAC address generation bug.
- Manual Inspection: Add subunit grid is misconfigured.
- Web app Search bar create sys log error when no internet.
- Rest Api: Post WSJF does not work without step ids.
- Operator Interface: Multiple API requests can be triggered when buttons are clicked.
- Operator Interface: UUR status in Unit History is Passed, should be Done.
- Reporting: Yield report (preview) - too many default columns.
- Operator Interface: Workflow Auto Initialize setting defaults to TRUE (should be FALSE)
- Control Panel: Unable to add a new repair operation



- Rest Api: Error in UpdateUnit
- Client: Incorrect client type during registration.
- Export wizard: Minor issue with logo placement in certificate
- Reporting: Dynamic Yield - Reset columns also resets grid name
- Reporting: Unable to draw variable single limits in step details chart
- Triggers: Triggers are not able to identify new reports
- Serial number handler: Improved MAC address input validation

Virinco AS, Gråterudveien 20, 3036 Drammen, Norway.

virinco@virinco.com | www.virinco.com

Copyright © 2021 Virinco AS | All rights reserved